

7.5.c

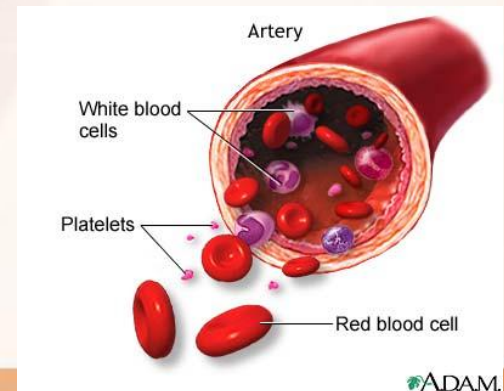
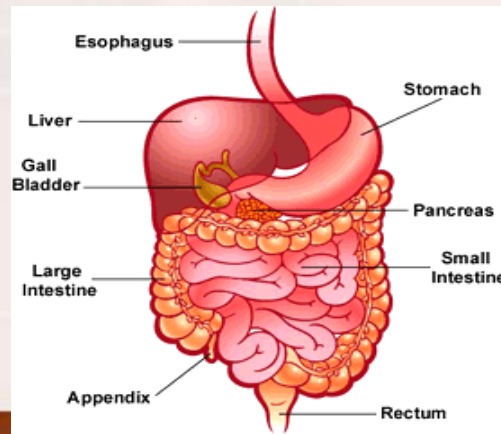
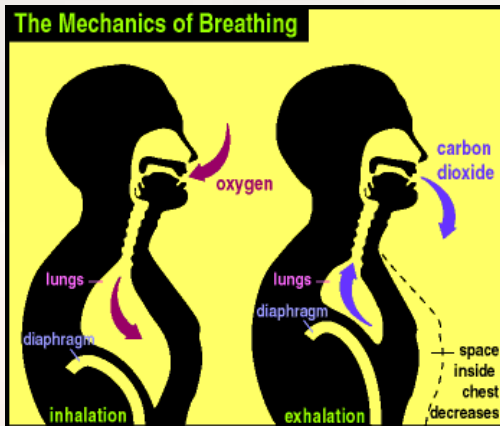
Students know how bones and muscles work together to provide a structural framework for movement.

We will be focusing on the muscular system.

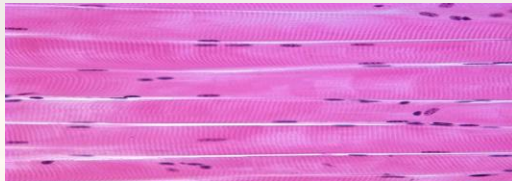
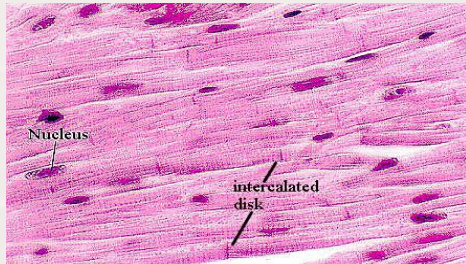
Muscular System

What is the function of the muscular system?

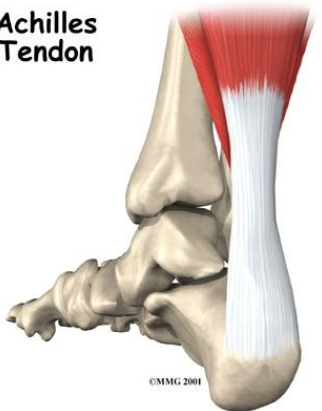
- ❖ Helps you to move
- ❖ Push blood through blood vessels
- ❖ Holds you upright
- ❖ Pushes food through the body



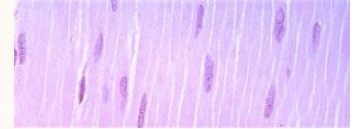
Structures of the system



Achilles Tendon



smooth muscle – found in digestive tract and blood vessels

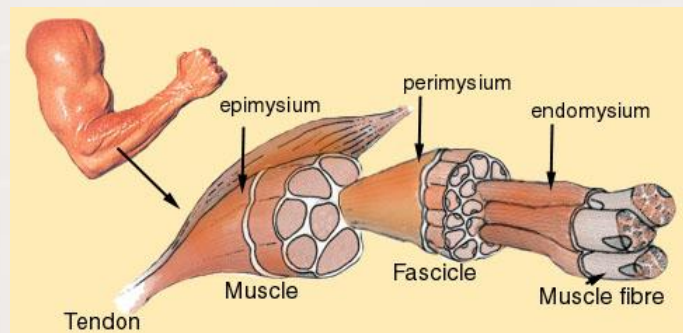


cardiac muscle - found only in the heart

skeletal muscles – are attached to your bones; also help protect inner organs

tendons – connective tissue that connects skeletal muscle to bone.

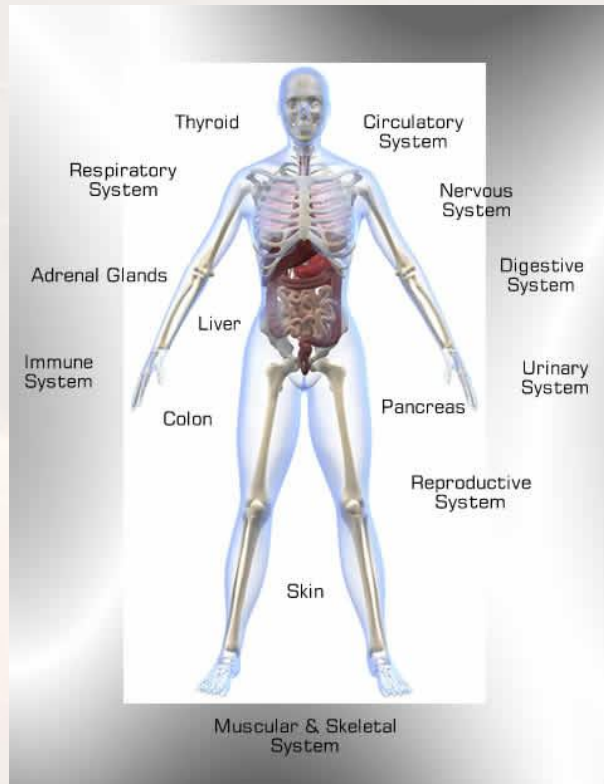
Types of muscle action



-voluntary - muscle action under your control (ex. skeletal muscles)

-involuntary – muscle action that is not under your control (smooth and cardiac muscle)

Working with other systems



-Cardiac muscles work with the circulatory system to pump blood through the body.

-Skeletal muscles work with the skeletal system to move the bones.

-Smooth muscles work with the digestive system to move food through your body.

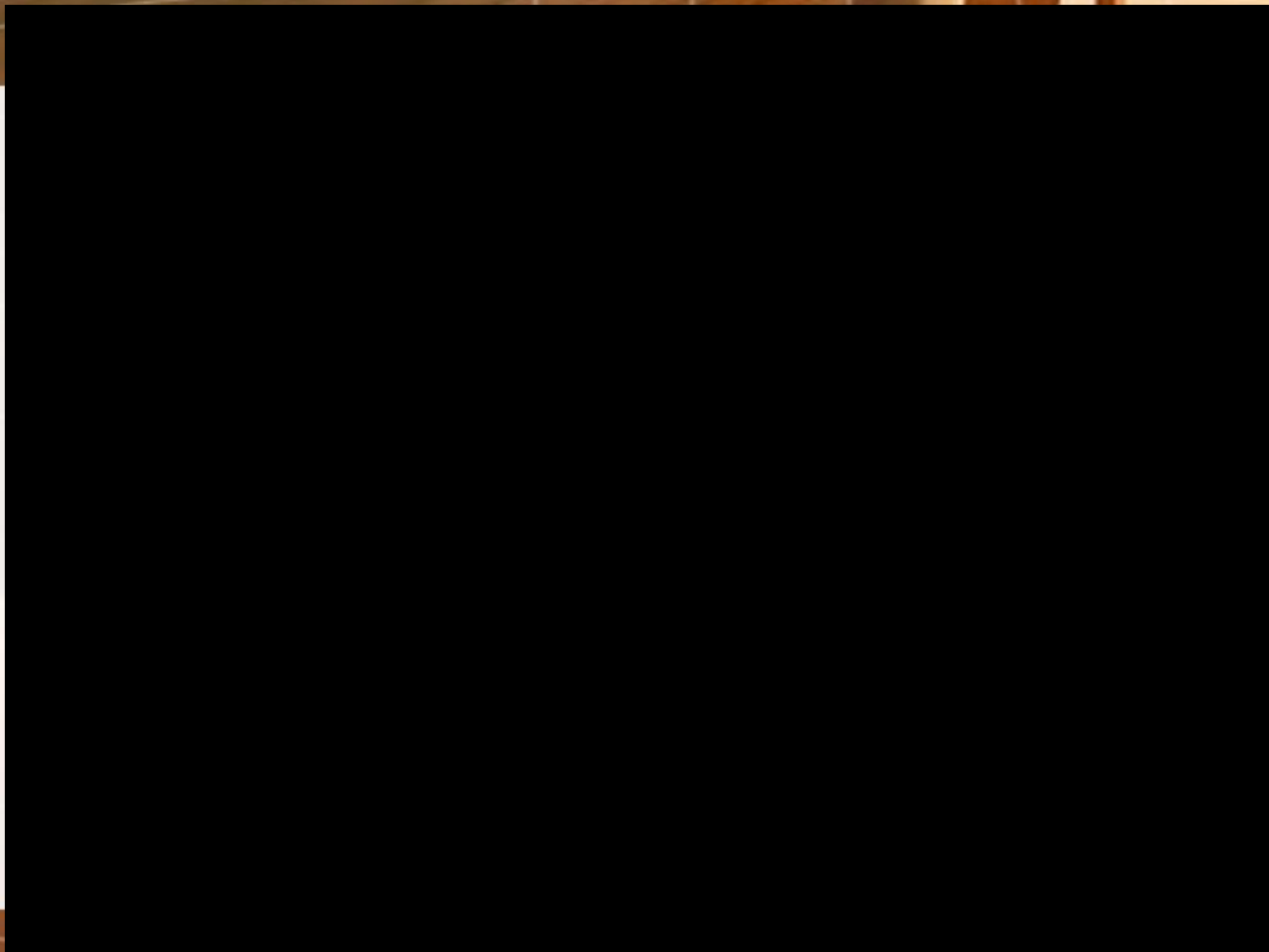
Diseases

Muscular Dystrophy

- Inherited disorder characterized by progressive weakness and wasting of the muscles.

Parkinson's Disease

Affects nerve cells in the brain that control muscle movement; the person has difficulty controlling movement.



Working with your face partner, answer these two questions. The person with the longest hair starts first.

1. Name the two types of muscle action.

Voluntary and Involuntary

2. Name the 3 types of muscle tissue.

Skeletal, smooth, and cardiac.

You will be working with your elbow partner. The person closest to the back of the room will start first.

1. Identify the functions of the muscular system.

a. Helps you breathe

c. Holds you upright

b. Pushes food through your body

d. Pushes blood through your blood vessels.

2. Where are the three types of muscles found.

1) Skeletal muscles attach muscle to bone.

2) Cardiac muscle found only in the heart.

3) Smooth muscle line the digestive tract and blood vessels.